



DAMING
REFRIGERATION

Спиральные герметичные компрессоры DAMING.

Согласованная работа спиралей в радиальном и осевом направлении для защиты компрессора от грязи и жидкости.

Минимальная вибрация, низкий уровень шума.

Улучшенная технология пуска: снижение внутреннего давления между деталями после остановки компрессора.

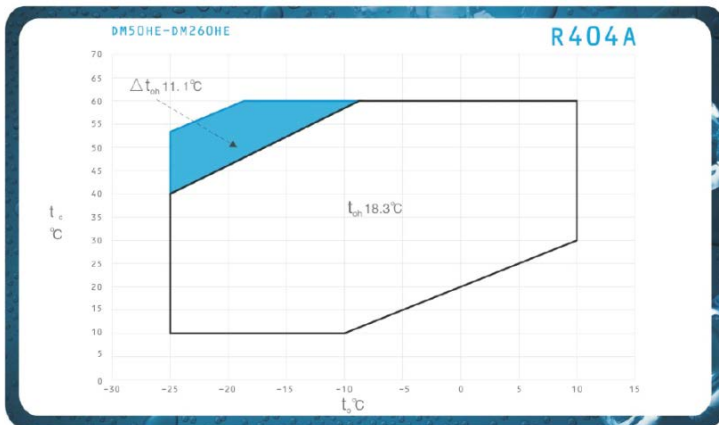
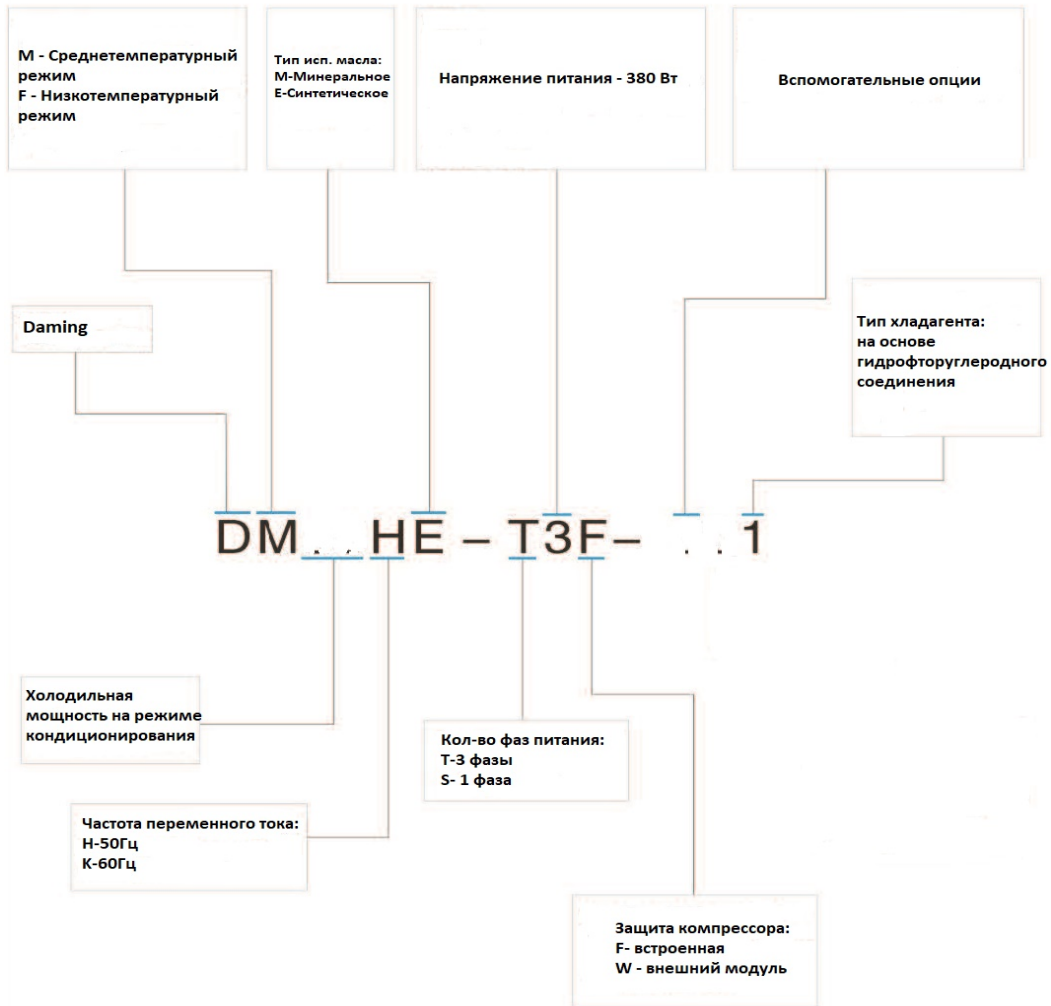
Хладагенты R404A / R507

	Холодопроизводительность		Ном. мощность, кВт	Диаметры соединительных патрубков, мм	Объемная производительность, м ³ /час	Масса, кг	Цена (Руб)
	Ткд=+40°C, кВт	Ткип=-8°C					
DM34HE-T3F-S01	4,23		1,73	7/8 / 1/2	5,8	28	42418
DM50HE-T3F-S01	5,93		2,20	7/8 / 1/2	8,6	28	43832
DM70HE-T3F-S01	8,30		2,97	7/8 / 1/2	11,8	28	46817
DM86HE-T3F-S01	10,05		3,67	7/8 / 1/2	14,5	37	48294
DM102HE-T3F-S01	11,83		4,40	7/8 / 1/2	17,2	38	55376
DM132HE-T3F-S01	15,63		5,75	7/8 / 1 1/8	21,6	54	93508
DM182HE-T3F-S01	20,95		7,45	7/8 / 1 1/8	29,1	54	97876
DM200HE-T3F-S01	24,79		8,85	7/8 / 1 1/8	33,1	56	100358
DF20HE-T3F-S01		2,96	2,20	7/8 / 1/2	8,6	28	56620
DF35HE-T3F-S01		5,31	3,67	7/8 / 1/2	14,5	37	60768
DF41HE-T3F-S01		5,65	4,40	7/8 / 1/2	17,2	37	65124
DF55HE-T3F-S01		7,96	5,90	7/8 / 1 1/8	21,4	54	103155
DF76HE-T3F-S01		10,51	5,71	7/8 / 1 1/8	29,1	54	107396
DF91HE-T3F-S01		12,98	8,80	7/8 / 1 1/8	33,1	56	109715

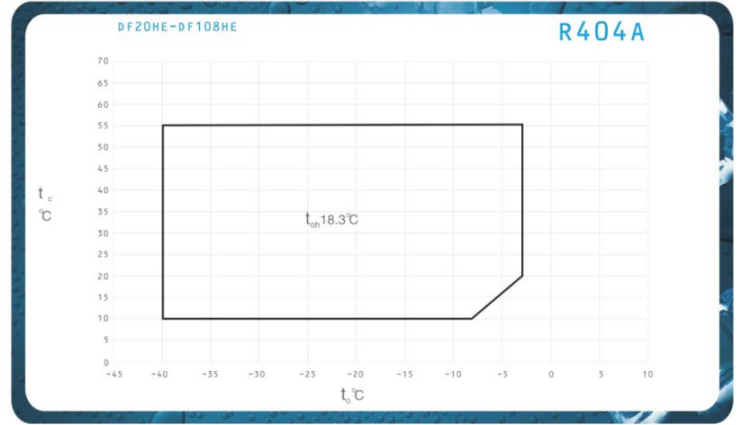
Комплектация:

- Соединение типа "Rotolock".
- DTC вентиль.

г.Москва, ул.Малышева д.11 корп.3
Тел.: (495)785-95-95, www.promholod.com



t_e (°C) : Evaporating temperature (°C)
 t_s (°C) : Suction gas temperature (°C)
 Δt_{sh} (K) : Suction superheat (K) — Maximum inspiroy superheat in blue wire 11.1K
 t_c (°C) : Condensing temperature (°C) — Return temperature in black wire frame 18.3°C



t_e (°C) : Evaporating temperature (°C)
 t_s (°C) : Suction gas temperature (°C)
 t_c (°C) : Condensing temperature (°C) — Return temperature in black wire frame 18.3°C

г.Москва, ул.Малышева д.11 корп.3
Тел.: (495)785-95-95, www.promholod.com

Технические параметры

DM – серия

DM技术参数 DM Technical Data
380V/420V, 3Ph, 50Hz

型号 Model		DM34 DM34	DM50 DM50	DM50 DM50	DM70 DM70	DM86 DM86	DM102 DM102	DM132 DM132	DM182 DM182	DM200 DM200
电机类型 Motor Type		3 Ph	1 Ph	3 Ph						
名义功率 Nominal Power	HP	2	3	3	4	5	6	8	10	12
排气量 Displacement	m ³ /h	5.8	8.6	8.6	11.8	14.5	17.2	21.6	29.1	33.1
堵转电流 Locked-rotor ampere (RLA)	A		82							
额定负载电流 Rated load ampere (RLA)	A	26	16.4	40	50	65.5	74	115	118	121
最大持续运行电流 Maximum continuous operating current (MCC)	A	15.2	23	5.7	7.6	8.7	11.3	14.3	19.2	22.1
电容 Run capacitor		7	60 μ F	8.1	10.3	13.5	16.1	19.8	26.9	31.1
曲轴箱加热功率 Crankcase heating power	W	70	70	70	70	70	70	90	90	90
接管外径尺寸 Outside Dimension (OD)	排气管 Discharge 吸气管 Suction	Inch	1/2	1/2	1/2	1/2	1/2	7/8	7/8	7/8
			7/8	7/8	7/8	7/8	7/8	1-1/8	1-1/8	1-1/8
外形尺寸 Dimensions	长(L) 宽(W) 高(H)	mm	242	242	242	242	242	242	242	242
			242	242	242	242	242	242	242	242
			415	415	415	415	455	455	540	540
底脚安装尺寸(孔径) Foot mounting dimensions.(Aperture)		190 × 190(8.5)								
油充注量 Oil Volume	L	1.4	1.4	1.4	1.4	1.9	1.9	3.4	3.4	3.4
重量 Weight	净重 N.W. 毛重 G.W.	kg	28	28	28	28	37	38	54	56
			29	29	29	29	38	39	55	57

г.Москва, ул.Малышева д.11 корп.3
Тел.: (495)785-95-95, www.promholod.com

DF – серия

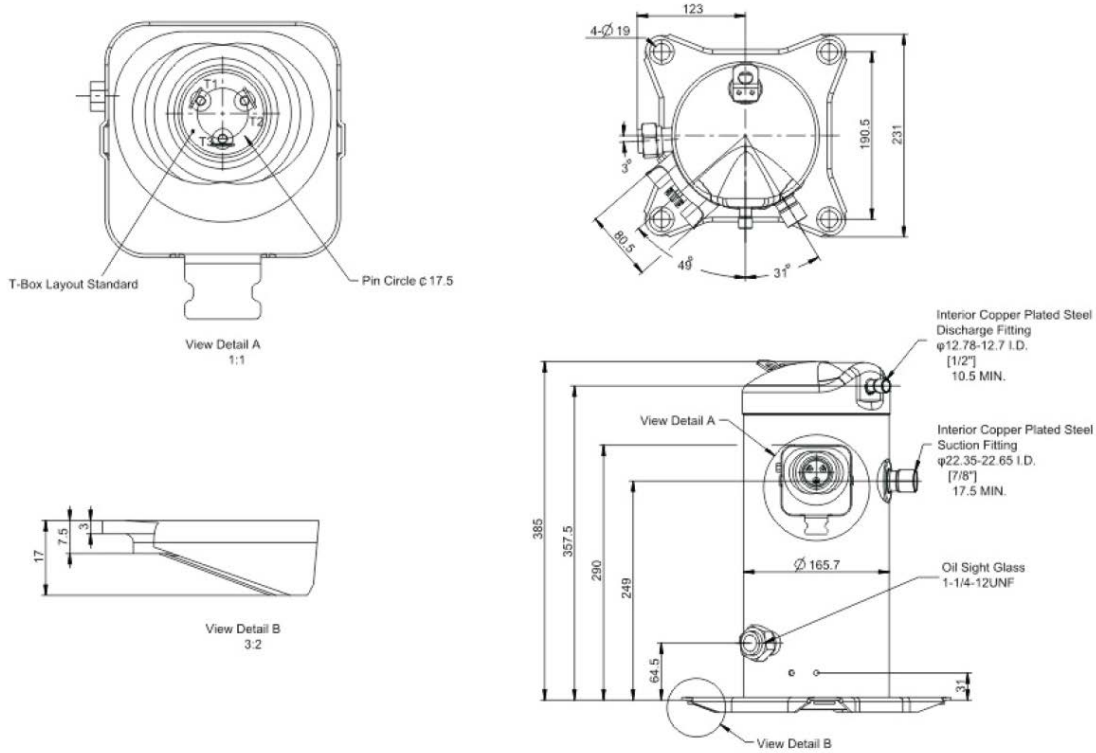
DF技术参数 DF Technical Data
380V/420V, 3Ph, 50Hz

型号 Model		DF13 DF13	DF20 DF20	DF29 DF29	DF35 DF35	DF41 DF41	DF55 DF55	DF76 DF76	DF91 DF91	
名义功率 Nominal Power	HP	2	3	4	5	6	8	10	12	
排气量 Displacement	m ³ /h	5.9	8.6	11.8	14.5	17.2	21.4	29.1	33.1	
电机类型 Motor Type		380V/420V, 3Ph, 50Hz								
堵转电流 Locked-rotor ampere (RLA)	A	40	40	60	64	74	102	100	118	
最大运行电流 Maximum operating current (MOC)	A	6	6	10	10	12.5	13.7	25	29	
最大持续运行电流 Maximum continuous operating current (MCC)	A	3.8	6.5	8.8	12	13.5	16.6	25	27	
额定负载电流 Rated load ampere (RLA)	A	2.7	4.6	5.2	8.6	8.9	11.9	17.9	19.3	
曲轴箱加热功率 Crankcase heating power	W	70	70	70	70	70	90	90	90	
焊接接口外径尺寸 Outside diameter of welded joint	排气管 Discharge	Inch	1/2	1/2	1/2	1/2	1/2	7/8	7/8	7/8
	吸气管 Suction		7/8	7/8	7/8	7/8	7/8	1-1/8	1-1/8	1-1/8
	喷射口 Injection orifice		11/16							
外形尺寸 Dimensions	长(L)	mm	231	231	231	231	231	242	242	242
	宽(W)		231	231	231	231	231	242	242	242
	高(H)		415	415	455	455	455	540	540	540
底脚安装尺寸(孔径) Foot mounting dimensions. (Aperture)		190 x 190 (8.5)								
油充注量 Oil Volume	L	1.4	1.4	1.9	1.9	1.9	3.4	3.4	3.4	
重量 Weight	净重 N.W.	kg	28	28	37	37	37	54	54	56
	毛重 G.W.		29	29	38	38	38	55	55	57

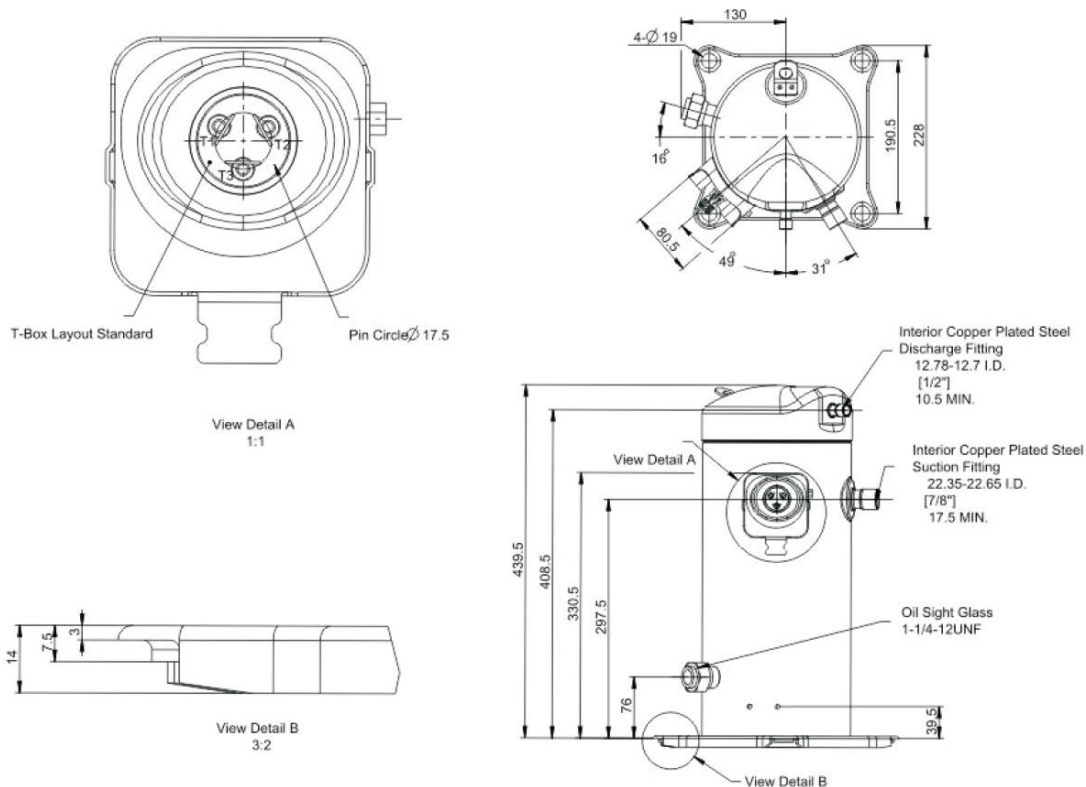
г.Москва, ул.Малышева д.11 корп.3
Тел.: (495)785-95-95, www.promholod.com

Габаритные чертежи

*DM – серия
DM34 – DM70*

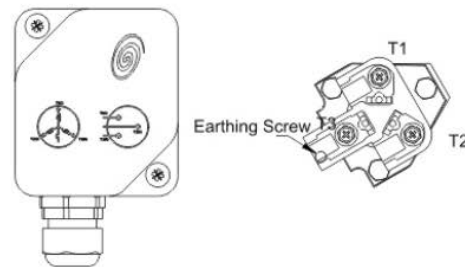
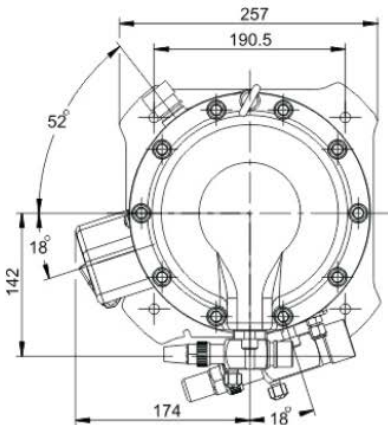
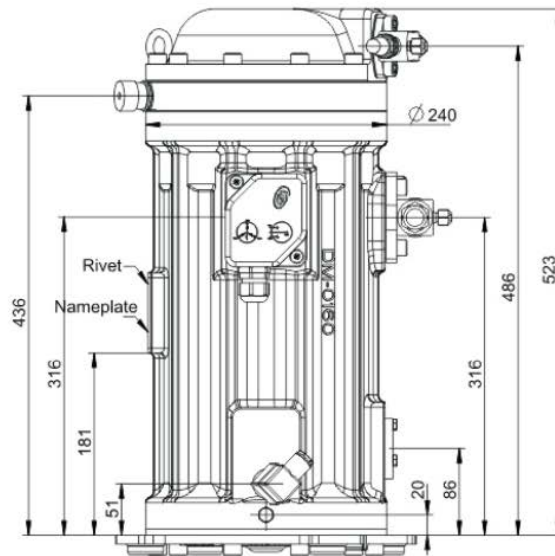
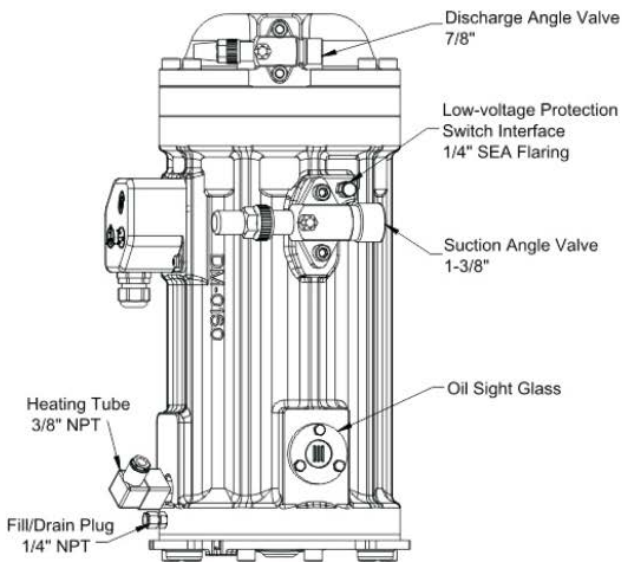
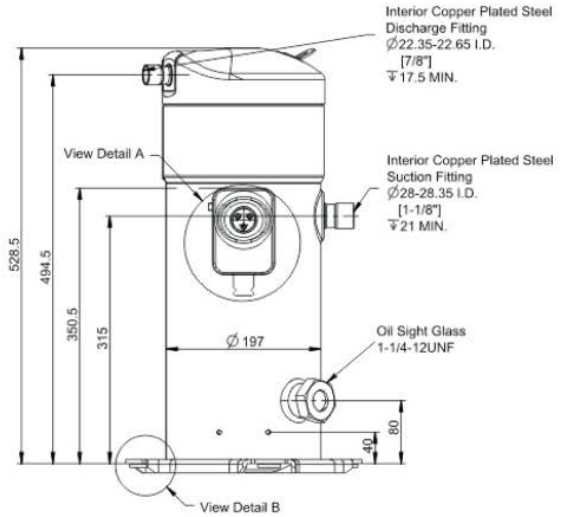
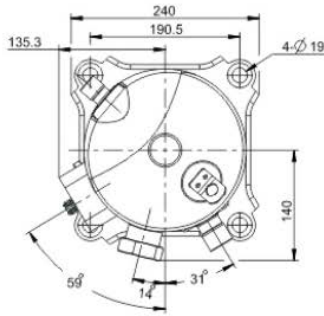
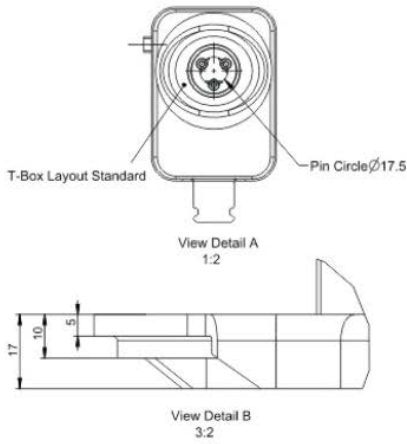


DM86 – DM102



г.Москва, ул.Малышева д.11 корп.3
Тел.: (495)785-95-95, www.promholod.com

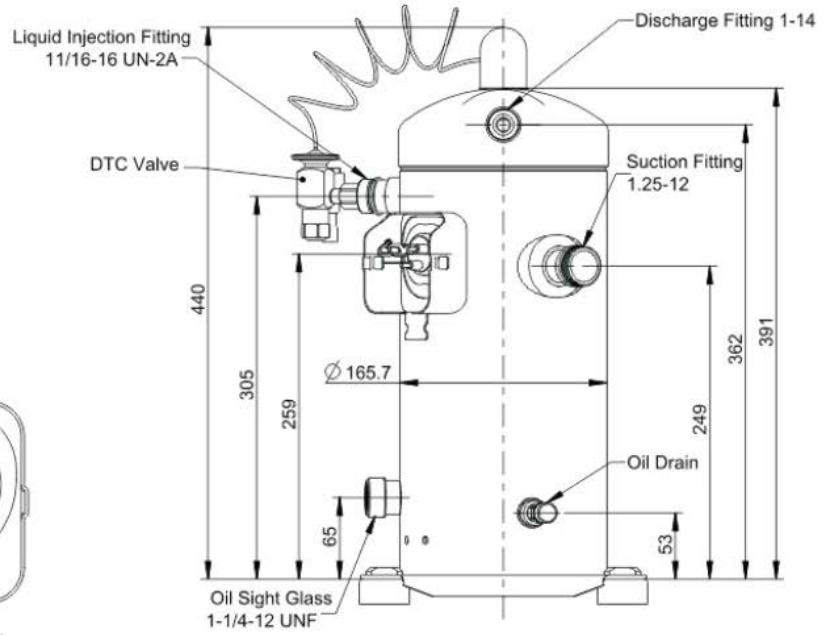
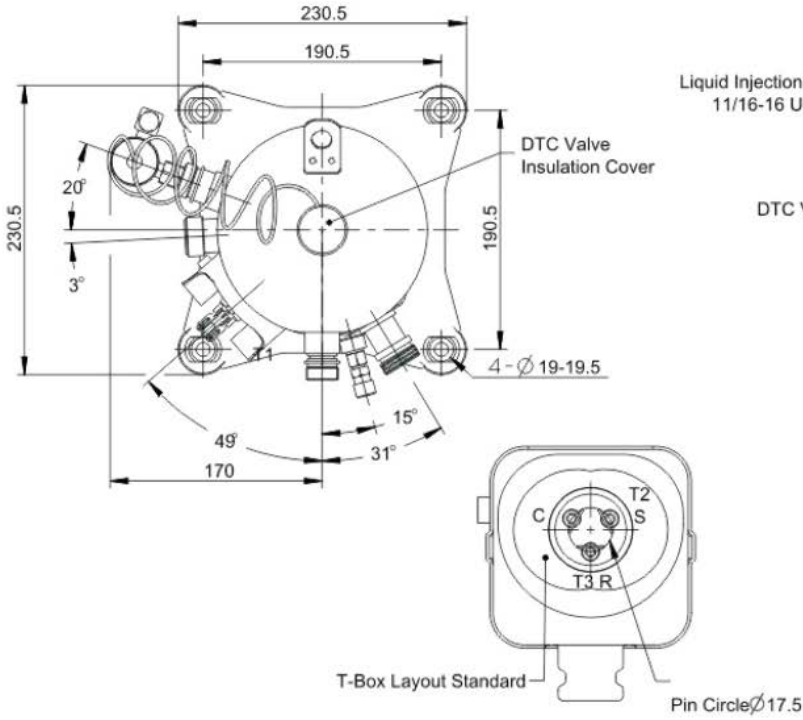
DM132 - DM200



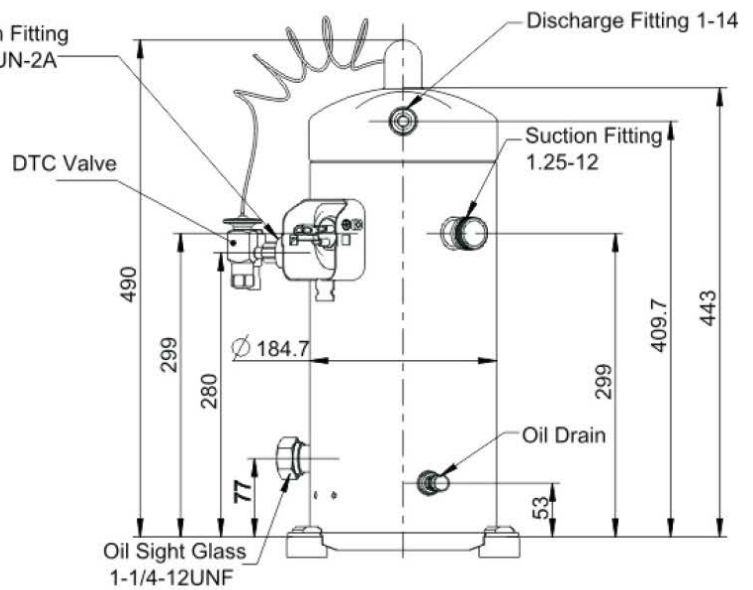
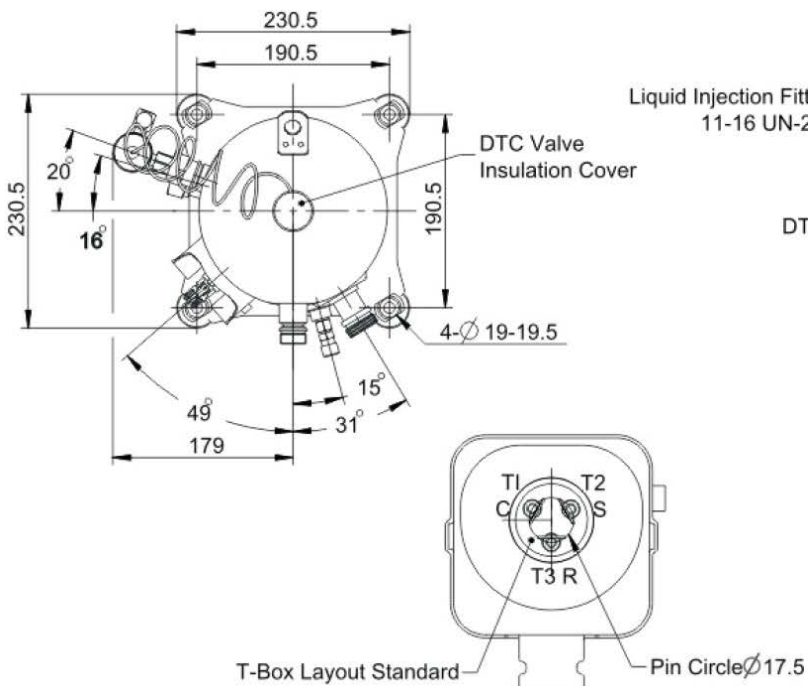
Compressor Wiring Diagram

г.Москва, ул.Малышева д.11 корп.3
Тел.: (495)785-95-95, www.promholod.com

*DF – серия
DF13 – DF29*

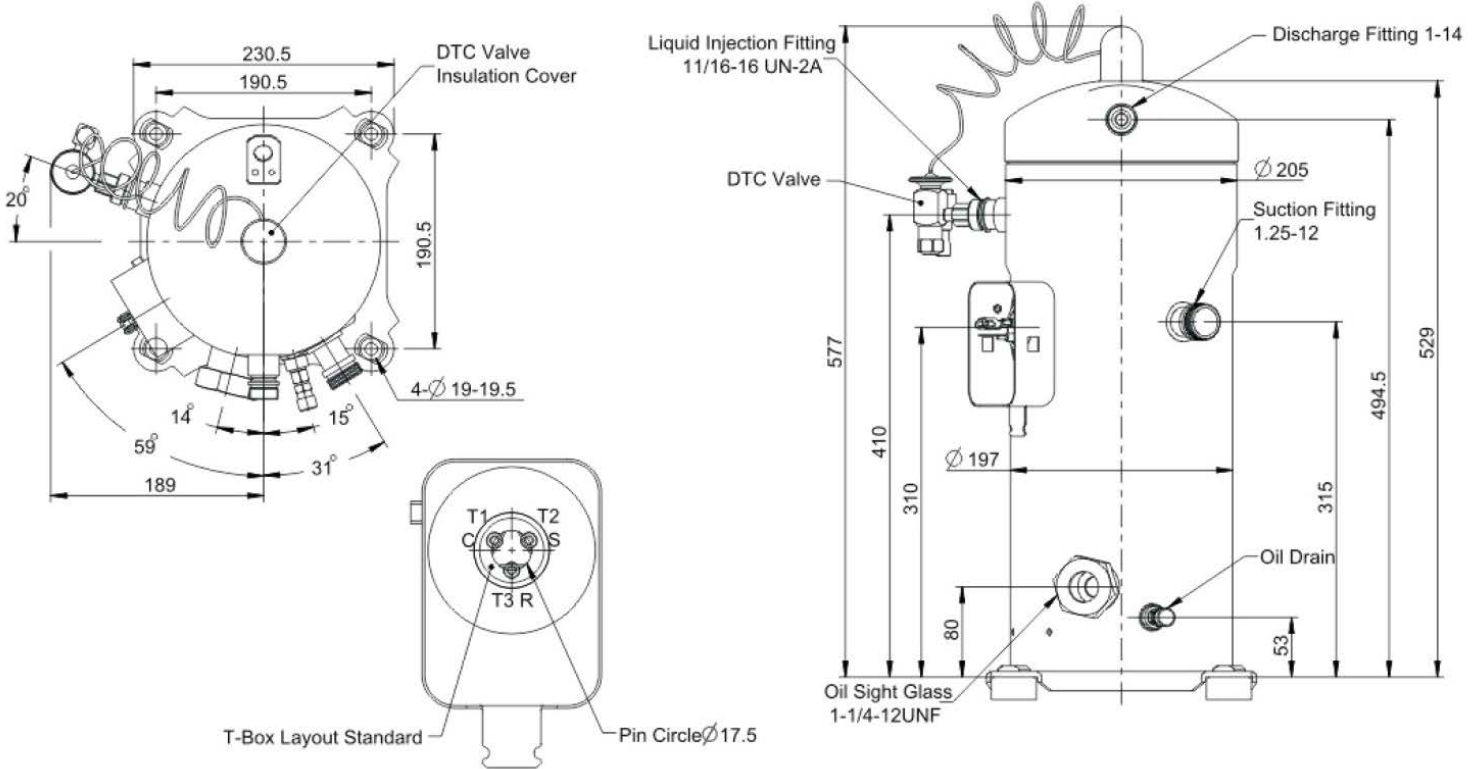


DF35 – DF41



г.Москва, ул.Малышева д.11 корп.3
Тел.: (495)785-95-95, www.promholod.com

DF55..DF91



г.Москва, ул.Малышева д.11 корп.3
Тел.: (495)785-95-95, www.promholod.com

Таблицы производительности
DM – серия

DM全封制冷量 DM Cooling Capacity(C/C)R404A
380V/420V, 3Ph, 50Hz

型号 Model		冷凝温度 Condensing Temperature °C	蒸发温度 Evaporating Temperature(°C)						
			-25	-20	-15	-10	-5	0	5
DM34HE	Q(Kw)	30	2.45	3.06	2.81	4.51	5.41	6.37	7.23
		40	2.2	2.7	3.25	3.89	4.73	5.59	6.68
		50	1.83	2.32	3.75	3.32	4.04	4.80	5.65
	P(Kw)	30	1.23	1.30	1.36	1.43	1.51	2.19	1.64
		40	1.45	1.56	1.62	1.71	1.77	1.85	1.92
		50	1.75	1.85	1.93	2.03	2.11	1.56	2.27
DM50HE	Q(Kw)	30	3.45	4.29	5.25	6.35	7.65	9.09	10.75
		40	2.99	3.69	4.55	5.49	6.59	7.89	9.35
		50	2.43	3.09	3.75	4.55	5.49	6.55	7.79
	P(Kw)	30	1.77	1.77	1.77	1.76	1.76	1.75	1.75
		40	2.24	2.24	2.24	2.23	2.22	2.21	2.19
		50	2.85	2.83	2.83	2.82	2.81	2.79	2.77
DM70HE	Q(Kw)	30	4.86	5.96	7.26	8.75	10.25	12.58	15.10
		40	4.35	5.26	6.38	7.68	9.22	10.92	12.96
		50	3.65	4.51	5.35	6.55	7.83	9.25	10.94
	P(Kw)	30	2.16	2.25	2.35	2.48	2.58	2.70	2.82
		40	2.57	2.71	2.78	2.92	3.05	3.18	3.28
		50	3.02	3.18	3.36	3.52	3.65	3.78	3.95
DM86HE	Q(Kw)	30	5.89	7.29	8.89	10.79	12.95	15.39	18.19
		40	5.09	6.25	7.69	9.29	11.19	13.35	15.79
		50	3.82	5.19	6.35	7.75	9.35	11.19	13.29
	P(Kw)	30	2.99	2.99	2.99	2.99	2.97	2.95	2.92
		40	3.75	3.76	3.76	3.76	3.76	3.74	3.71
		50	4.67	4.67	4.68	4.68	4.68	4.67	4.65
DM102HE	Q(Kw)	30	7.03	8.51	10.39	12.61	15.15	18.15	21.45
		40	5.57	7.35	9.05	10.95	13.15	15.75	18.55
		50	4.43	6.05	7.55	9.15	10.95	13.05	15.45
	P(Kw)	30	3.35	3.35	3.35	3.35	3.34	3.32	3.31
		40	4.24	4.24	4.24	4.23	4.21	4.19	4.15
		50	5.36	5.36	5.36	5.35	5.32	5.29	5.24
DM132HE	Q(Kw)	30	8.89	11.25	13.95	16.99	20.59	24.59	29.19
		40	7.05	9.25	11.69	14.39	17.49	20.99	24.89
		50	5.81	6.89	9.09	11.49	14.15	17.09	20.39
	P(Kw)	30	4.56	4.57	4.59	4.61	4.64	4.67	4.69
		40	5.85	5.79	5.75	5.75	5.75	5.75	5.75
		50	6.55	7.45	7.35	7.25	7.21	7.15	7.15
DM182HE	Q(Kw)	30	12.39	15.39	18.79	22.79	27.39	32.49	38.49
		40	10.89	13.29	16.09	19.39	23.29	27.79	32.99
		50	7.45	11.19	13.19	15.69	18.69	22.19	26.39
	P(Kw)	30	5.79	5.89	5.99	6.05	6.15	6.25	6.39
		40	7.25	7.29	7.39	7.45	7.49	7.59	7.69
		50	8.48	9.15	9.19	9.25	9.25	9.31	9.39
DM200HE	Q(Kw)	30	15.46	17.85	21.56	26.67	31.79	37.81	45.61
		40	11.09	14.75	19.06	22.99	27.48	33.36	38.54
		50	8.97	11.56	13.24	17.11	22.02	27.45	32.49
	P(Kw)	30	5.99	6.71	6.62	6.57	6.68	7.08	7.91
		40	7.65	8.77	8.81	8.85	8.89	8.93	8.98
		50	9.67	9.98	10.88	10.91	10.98	11.01	11.07

注: 1.测试条件: 回气温度18.3°C, 过冷度0 K
2.最低蒸发温度保持-25°C
3. 区域: 最大吸气过热度为11.1 K

NOTE:1. Test Condition: Suction gas temperature 18.3°C, supercooling degree 0 K
2. The lowest evaporation temperature : -25 °C
3. area: Maximum Suction superheat :11.1 K

г.Москва, ул.Малышева д.11 корп.3
Тел.: (495)785-95-95, www.promholod.com

DF – серия

DF全封制冷量 DF Cooling Capacity(C/C) R404
380V/420V, 3Ph, 50Hz

型号 Model		冷凝温度 Condensing Temperature °C	蒸发温度 Evaporating Temperature(°C)							
			-40	-35	-30	-25	-20	-15	-10	-5
DF13HE	Q(Kw)	30	1.18	1.58	1.96	2.47	2.95	3.84	4.45	5.32
		40	1.09	1.36	1.75	2.16	2.58	3.32	4.16	4.98
		50	0.95	1.18	1.46	1.76	2.14	2.89	3.35	3.94
	P(Kw)	30	1.12	1.12	1.21	1.22	1.31	1.42	1.52	1.53
		40	1.32	1.29	1.42	1.52	1.45	1.61	1.73	1.71
		50	1.65	1.45	1.72	1.84	1.79	1.92	2.02	2.53
DF20HE	Q(Kw)	30	1.71	2.17	2.71	3.35	4.11	4.97	5.97	7.13
		40	1.53	1.94	2.41	2.96	3.61	4.35	5.23	6.23
		50	1.32	1.67	2.07	2.52	3.06	3.69	4.42	5.27
	P(Kw)	30	1.46	1.48	1.52	1.57	1.65	1.74	1.84	1.96
		40	1.77	1.78	1.81	1.86	1.92	2.01	2.11	2.21
		50	2.16	2.16	2.18	2.22	2.27	2.34	2.43	2.53
DF29HE	Q(Kw)	30	2.38	3.15	3.92	4.89	5.81	7.26	9.12	10.78
		40	2.16	2.76	3.89	4.28	5.23	6.32	7.85	9.56
		50	1.75	2.34	2.85	3.51	4.32	5.17	6.48	7.69
	P(Kw)	30	1.84	2.05	2.12	2.21	2.32	2.51	2.61	2.82
		40	2.27	2.47	2.43	2.58	2.85	2.92	3.02	3.26
		50	2.82	3.05	2.87	3.20	3.43	3.58	3.70	3.83
DF35HE	Q(Kw)	30	3.01	3.89	4.91	6.08	7.44	9.01	10.82	12.89
		40	2.66	3.42	4.29	5.31	6.47	7.84	9.43	11.26
		50	2.36	2.95	3.64	4.44	5.41	6.53	7.86	9.41
	P(Kw)	30	2.21	2.33	2.45	2.58	2.73	2.91	3.09	3.31
		40	2.68	2.82	2.95	3.09	3.24	3.41	3.61	3.81
		50	3.26	3.42	3.58	3.73	3.91	4.07	4.25	4.45
DF41HE	Q(Kw)	30	3.71	4.71	5.85	7.21	8.78	10.64	12.81	15.33
		40	3.29	4.17	5.17	6.34	7.71	9.31	11.17	13.36
		50	2.81	3.57	4.41	5.37	6.51	7.83	9.41	11.25
	P(Kw)	30	2.79	2.89	3.01	3.14	3.29	3.46	3.65	3.85
		40	3.29	3.41	3.53	3.67	3.83	4.01	4.18	4.38
		50	3.92	4.04	4.18	4.33	4.49	4.67	4.85	5.05
DF55HE	Q(Kw)	30	4.59	5.81	7.32	9.08	11.09	13.32	15.75	18.37
		40	4.09	5.12	6.42	7.96	9.73	11.71	13.87	16.21
		50	3.63	4.45	5.51	6.79	8.28	9.96	11.81	13.82
	P(Kw)	30	3.03	3.31	3.54	3.76	4.01	4.31	4.67	5.16
		40	3.43	3.81	4.11	4.39	4.69	5.03	5.44	5.95
		50	3.84	4.31	4.72	5.09	5.46	5.85	6.32	6.87
DF76HE	Q(Kw)	30	6.03	7.72	9.67	11.94	14.57	17.62	21.16	25.23
		40	5.31	6.82	8.54	10.51	12.79	15.44	18.51	22.06
		50	4.47	5.79	7.25	8.91	10.81	13.01	15.59	18.58
	P(Kw)	30	4.18	4.41	4.67	4.93	5.22	5.53	5.85	6.21
		40	4.85	5.16	5.46	5.77	6.08	6.41	6.73	7.07
		50	5.66	6.04	6.41	6.77	7.13	7.48	7.82	8.16
DF91HE	Q(Kw)	30	7.57	9.62	11.96	14.69	17.88	21.62	25.98	31.04
		40	6.71	8.56	10.62	12.98	15.71	18.91	22.64	26.99
		50	5.65	7.29	9.06	11.04	13.31	15.96	19.05	22.68
	P(Kw)	30	5.07	5.41	5.75	6.11	6.48	6.88	7.31	7.75
		40	5.95	6.33	6.72	7.12	7.52	7.94	8.36	8.81
		50	6.95	7.41	7.85	8.29	8.74	9.18	9.63	10.09

注: 1.测试条件: 回气温度18.3°C, 过冷度0K
2.最低蒸发温度保持-40°C

NOTE:1.Test Condition: Suction gas temperature18.3°C, supercooling degree 0 K
2.The lowest evaporation temperature : -40 °C