



DAMING
REFRIGERATION

Поршневые полугерметичные компрессоры DAMING.

Передовые технологии, компактные размеры.

Полное соответствие европейским аналогам: высокоточная обработка, стабильная работа, минимальная вибрация, низкий уровень шума

Хладагенты R404A / R507A

	Холодопроизв-ть Ткд=+40°C, кВт		Ном. мощнос ть, кВт	Диаметры соед. патрубокв, мм	Объемна я произв- ть, м куб/час	Масса, кг	Цена (Руб)
	Ткип=-8°C	Ткип=-25°C					
2YG-4.2	9,40	4,45	3,0	16/22	16,2	70	41200
4YG-5.2	10,40	4,90	3,7	16/22	18,1	86	68200
4YG-6.2	13,18	6,16	4,4	22/28	22,7	86	69400
4YG-7.2	15,61	7,25	5,1	22/28	26,8	88,5	70400
4YG-9.2	18,89	9,05	6,6	22/28	32,5	90,5	74700
4YG-12.2	24,58	11,32	8,8	28/35	41,3	141	108800
4YG-15.2	29,45	13,49	10,5	28/35	48,5	147	112000
4YG-20.2	34,03	15,53	15,0	28/42	56,2	150	121000
BFS151	34,38	16,70	10,5	28/38,1	54,0	172	103700
4VD-15.2	44,63	21,50	10,5	28/42	73,6	183	135000
4VG-25.2	44,15	20,80	18,5	28/54	73,6	203	158200
4VD-20.2	51,26	24,80	15,0	28/54	84,5	192	152400
4VG-30.2	51,00	24,20	22,0	28/54	84,5	206	170400
6WG-35.2	66,18	31,10	25,5	42/54	110,5	235	207000
6WG-40.2	76,34	36,30	30,0	42/54	126,8	238	211700
6WG-50.2	90,68	43,60	37,0	42/54	151,6	241	235600

Комплектация:

- Устройство защиты электродвигателя
- Подогрев картера компрессора.
- Реле давления масла (начиная с модели 4VD-15.2).

г.Москва, ул.Малышева д.11 корп.3
Тел.: (495)785-95-95, www.promholod.com

2YD-2.2—6WG-50.2

2/4/6 Кол-во цилиндров

Y/V/W Тип

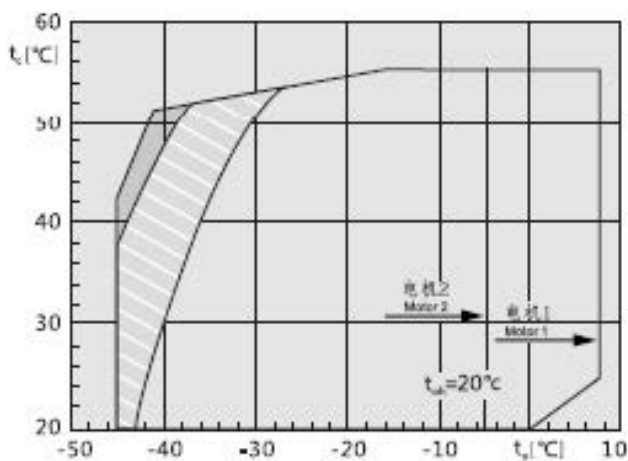
D/G D- низкотемпературное исполнение
G- среднетемпературное исполнение

2 Мощность эл.двигателя компрессора

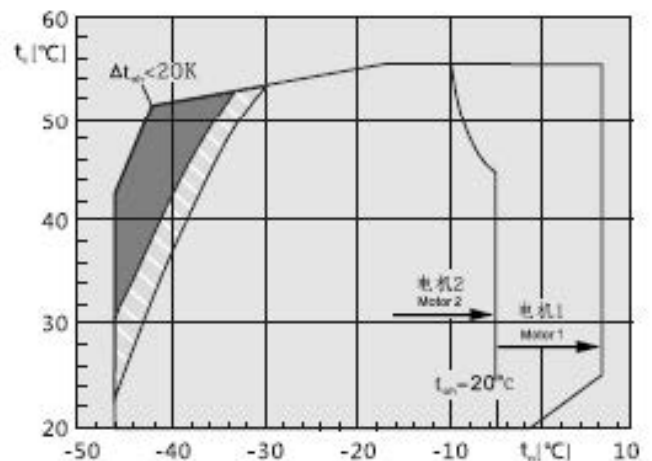
2 Код серии

Application Scope
Suction gas temperature 20°C

R404A•R507A
2YD-2.2—4YG-9.2



R404A•R507A
4YD-8.2—6WG-50.2



г.Москва, ул.Малышева д.11 корп.3
Тел.: (495)785-95-95, www.promholod.com

Таблицы производительности

Model	Condensing Temperature °C	Refrigerating Capacity Qo(W)										Power Consumption Pe(kW)							
		↓	Evaporating Temperature(°C)																
			7.5	5	0	-5	-10	-15	-20	-25	-30	-35	-40	-45	-50	-55	-60	-65	-70
2YD-2.2	30	Qo				10110	8340	6810	5490	4360	3390	2570	1880	1300					
		Pe				2.72	2.59	2.43	2.25	2.05	1.83	1.59	1.35	1.09					
	40	Qo				8490	6980	5670	4530	3560	2720	2020	1420	920					
		Pe				3.15	2.94	2.7	2.44	2.17	1.88	1.58	1.28	0.98					
	50	Qo				6900	5640	4550	3600	2780	2080	1490	990						
		Pe				3.55	3.25	2.93	2.59	2.25	1.9	1.54	1.19						
2YG-3.2	30	Qo	15940	14630	12260	10200	8420	6870	5540	4400	3420	2590	1890						
		Pe	2.79	2.8	2.77	2.71	2.6	2.45	2.28	2.08	1.86	1.62	1.37						
	40	Qo	13510	12390	10380	8610	7080	5750	4600	3610	2760	2040	1430						
		Pe	3.49	3.44	3.32	3.16	2.96	2.74	2.49	2.21	1.92	1.62	1.31						
	50	Qo	11110	10180	8500	7030	5740	4630	3650	2820	2110	1510	1000						
		Pe	4.11	4.02	3.8	3.55	3.27	2.96	2.63	2.29	1.93	1.57	1.2						
2YD-3.2	30	Qo				12470	10290	8400	6780	5380	4190	3180	2330	1630					
		Pe				3.33	3.15	2.95	2.72	2.48	2.21	1.93	1.64	1.35					
	40	Qo				10510	8650	7040	5640	4440	3420	2550	1810	1200					
		Pe				3.85	3.58	3.29	2.98	2.65	2.32	1.97	1.62	1.27					
	50	Qo				8590	7050	5710	4550	3540	2600	1950	1340						
		Pe				4.35	3.98	3.60	3.21	2.80	2.39	1.98	1.57						
2YG-4.2	30	Qo	19440	17840	14960	12450	10280	8400	6770	5380	4190	3170	2320						
		Pe	3.48	3.48	3.42	3.32	3.17	2.98	2.76	2.50	2.23	1.94	1.64						
	40	Qo	16470	15110	12660	10520	8660	7050	5650	4450	3420	2540	1810						
		Pe	4.31	4.25	4.08	3.86	3.61	3.33	3.02	2.69	2.34	1.98	1.61						
	50	Qo	13550	12430	10400	8620	7070	5720	4550	3540	2690	1960	1340						
		Pe	5.08	4.96	4.68	4.36	4.01	3.63	3.23	2.82	2.40	1.98	1.55						
4YD-3.2	30	Qo				13720	11330	9260	7470	5940	4630	3510	2580	1800					
		Pe				3.85	3.66	3.44	3.18	2.90	2.58	2.24	1.88	1.50					
	40	Qo				11560	9520	7740	6200	4880	3750	2790	1980	1310					
		Pe				4.42	4.10	3.76	3.40	3.03	2.63	2.23	1.82	1.40					
	50	Qo				9450	7740	6260	4970	3860	2910	2110	1430						
		Pe				4.91	4.48	4.04	3.59	3.13	2.67	2.22	1.77						
4YG-5.2	30	Qo	21550	19790	16590	13810	11400	9320	7520	5970	4650	3530	2580						
		Pe	3.78	3.79	3.76	3.67	3.52	3.32	3.07	2.79	2.48	2.15	1.81						
	40	Qo	18240	16740	14020	11650	9580	7790	6240	4900	3760	2790	1970						
		Pe	4.65	4.60	4.46	4.25	3.99	3.69	3.35	2.98	2.59	2.18	1.76						
	50	Qo	14970	13730	11470	9500	7780	6280	4980	3860	2900	2090	1410						
		Pe	5.44	5.33	5.07	4.75	4.39	3.98	3.55	3.10	2.62	2.14	1.65						
4YD-4.2	30	Qo				17330	14290	11660	9400	7450	5800	4390	3210	2220					
		Pe				4.61	4.39	4.12	3.81	3.45	3.06	2.65	2.22	1.78					
	40	Qo				14440	11870	9650	7720	6070	4650	3450	2440	1590					
		Pe				5.28	4.93	4.53	4.10	3.64	3.15	2.65	2.14	1.63					
	50	Qo				11650	9550	7720	6130	4760	3590	2590	1750						
		Pe				5.86	5.39	4.87	4.33	3.77	3.19	2.60	2.02						
4YG-6.2	30	Qo	27500	25200	21100	17580	14500	11830	9530	7550	5860	4420	3210						
		Pe	4.73	4.75	4.73	4.62	4.43	4.17	3.85	3.48	3.08	2.65	2.21						
	40	Qo	23150	21250	17780	14750	12120	9840	7880	6160	4700	3470	2420						
		Pe	5.87	5.81	5.62	5.35	5.01	4.61	4.17	3.68	3.17	2.65	2.12						
	50	Qo	18930	17360	14490	11980	9790	7890	6240	4820	3600	2570	1710						
		Pe	6.86	6.72	6.37	5.95	5.47	4.95	4.38	3.79	3.19	2.58	1.97						
4YD-5.2	30	Qo				21100	17420	14220	11470	9100	7080	5370	3930	2730					
		Pe				5.52	5.29	4.99	4.62	4.18	3.70	3.19	2.66	2.11					
	40	Qo				17650	14520	11810	9480	7440	5720	4250	3010	1980					
		Pe				6.34	5.95	5.50	4.99	4.43	3.83	3.22	2.60	1.98					
	50	Qo				14300	11730	9490	7550	5880	4440	3220	2190						
		Pe				7.07	6.53	5.93	5.29	4.62	3.92	3.22	2.52						
4YG-10.2	30	Qo	42750	39200	32800	27250	22400	18240	14610	11490	8810	6530	4580						
		Pe	7.14	7.13	7.01	6.76	6.41	5.96	5.45	5.52	4.27	3.64	3.00						
	40	Qo	36100	33100	27600	22850	18680	15070	11550	18110	6960	5000	3350						
		Pe	8.67	8.54	8.18	7.70	7.14	6.50	5.30	6.17	4.31	3.55	2.80						
	50	Qo	29550	27050	22500	18490	15020	12010	9410	15540	5290	3690	2360						
		Pe	9.97	9.71	9.13	8.44	7.68	6.87	6.01	6.82	4.26	3.39	2.57						

Suction gas temperature 20°C, 50Hz, without liquid subcooling.
Additional cooling or limited suction gas temperature.

г.Москва, ул.Малышева д.11 корп.3
Тел.: (495)785-95-95, www.promholod.com

Model	Condensing Temperature °C	Refrigerating Capacity Qo(W)											Power Consumption Pe(kW)						
		Evaporating Temperature(°C)																	
		↓	7.5	5	0	-5	-10	-15	-20	-25	-30	-35	-40	-45	-50	-55	-60	-65	-70
4YG-7.2	30	Qo	32600	29900	25000	20800	17120	13950	11210	8860	6860	5160	3720						
		Pe	5.49	5.52	5.51	5.39	5.18	4.88	4.52	4.10	3.63	3.12	2.59						
	40	Qo	27500	25200	21100	17490	14350	11630	9270	7250	5510	4040	2800						
		Pe	6.81	6.75	6.55	6.26	5.88	5.43	4.91	4.35	3.74	3.11	2.47						
	50	Qo	22500	20600	17210	14230	11620	9350	7380	5690	4240	3010	1980						
		Pe	7.98	7.83	7.46	7.00	6.46	5.86	5.20	4.50	3.78	3.03	2.28						
4YD-6.2	30	Qo				24950	20650	16900	13670	10900	8540	6530	4840	3420					
		Pe				6.65	6.36	5.98	5.52	5.01	4.45	3.86	3.25	2.63					
	40	Qo				21100	17420	14200	11420	9030	6980	5240	3770	2540					
		Pe				7.64	7.17	6.63	6.03	5.37	4.67	3.94	3.21	2.47					
	50	Qo				17320	14220	11520	9190	7180	5460	4000	2770						
		Pe				8.61	7.98	7.28	6.51	5.71	4.87	4.01	3.14						
4YG-9.2	30	Qo	38800	35600	29900	24900	20600	16880	13660	10890	8530	6530	4840						
		Pe	6.85	6.87	6.82	6.64	6.36	5.98	5.53	5.01	4.45	3.86	3.25						
	40	Qo	32850	30150	25300	21100	17410	14210	11440	9050	7000	5250	3770						
		Pe	8.35	8.27	8.01	7.64	7.18	6.63	6.02	5.36	4.66	3.94	3.21						
	50	Qo	27050	24850	20900	17380	14310	11620	9280	7240	5480	3960	2660						
		Pe	9.80	9.62	9.16	8.61	7.98	7.28	6.52	5.71	4.87	4.01	3.14						
4YD-8.2	30	Qo				33050	27250	22200	17890	14170	10990	8300	6040	4150					
		Pe				8.74	8.17	7.55	6.87	6.16	5.41	4.64	3.86	3.07					
	40	Qo				27750	22800	18480	14760	11560	8830	6520	4580	2960					
		Pe				9.86	9.05	8.20	7.34	6.46	5.57	4.66	3.74	2.81					
	50	Qo							18350	14790	11710	9070	6800	4880	3260				
		Pe							9.74	8.71	7.68	6.65	5.61	4.55	3.46				
4YG-12.2	30	Qo	51500	47200	39450	32750	26900	21900	17550	13830	10650	7960	5700						
		Pe	8.63	8.63	8.49	8.22	7.81	7.29	6.68	6.00	5.26	4.48	3.68						
	40	Qo	43500	39850	33300	27550	22600	18260	14530	11320	8590	6270	4320						
		Pe	10.66	10.47	9.99	9.40	8.72	7.96	7.15	6.29	5.40	4.51	3.62						
	50	Qo	35400	32400	27050	22350	18230	14650	11550	8880	6590	4650	3020						
		Pe	12.28	11.93	11.17	10.33	9.42	8.45	7.45	6.42	5.39	4.36	3.36						
4YD-10.2	30	Qo				38300	31600	25750	20700	16390	12690	9550	6910	4690					
		Pe				10.07	9.37	8.64	7.87	7.06	6.22	5.34	4.43	3.48					
	40	Qo				32300	26500	21500	17130	13400	10220	7520	5240	3350					
		Pe				11.39	10.45	9.47	8.45	7.41	6.35	5.30	4.25	3.22					
	50	Qo							21500	17290	13660	10550	7890	5640	3760				
		Pe							11.26	10.04	8.80	7.53	6.28	5.05	3.88				
4YG-15.2	30	Qo	61500	56400	47100	39050	32100	26000	20800	16320	12490	9240	6500						
		Pe	10.23	10.19	9.96	9.58	9.06	8.43	7.70	6.90	6.04	5.14	4.23						
	40	Qo	52200	47850	39950	33050	27050	21850	17360	13490	10190	7390	5020						
		Pe	12.41	12.14	11.51	10.79	9.99	9.11	8.18	7.19	6.17	5.13	4.07						
	50	Qo	42600	39000	32500	26750	21800	17430	13680	10460	7710	5380	3420						
		Pe	14.27	13.78	12.78	11.73	10.66	9.55	8.43	7.28	6.11	4.94	3.75						
4YD-12.2	30	Qo				44000	36250	29550	23750	18810	14580	11000	7980	5470					
		Pe				11.88	11.15	10.30	9.35	8.35	7.30	6.23	5.19	4.18					
	40	Qo				37300	30600	24800	19810	15510	11840	8740	6120	3950					
		Pe				13.39	12.33	11.18	9.97	8.71	7.44	6.19	4.99	3.87					
	50	Qo							24850	20000	15820	12210	9120	6510	4300				
		Pe							13.28	11.83	10.37	8.91	7.45	6.01	4.60				
4YG-20.2	30	Qo	71000	65100	54500	45250	37200	30250	24250	19070	14640	10860	7660						
		Pe	12.24	12.20	11.94	11.47	10.82	10.04	9.14	8.16	7.12	6.07	5.02						
	40	Qo	60500	55400	46250	38200	31250	25200	20000	15530	11730	8510	5820						
		Pe	14.78	14.49	13.79	12.91	11.91	10.80	9.62	8.40	7.16	5.95	4.78						
	50	Qo	49900	45650	37900	31100	25250	20150	15760	12010	8840	6180	3980						
		Pe	16.78	16.28	15.18	13.95	12.63	11.24	9.81	8.38	6.97	5.63	4.37						
4YD-15.2	30	Qo				58500	48400	39700	32200	25750	20250	15560	11630	8350					
		Pe				15.78	14.84	13.79	12.63	11.40	10.10	8.77	7.43	6.10					
	40	Qo				49850	41150	33600	27100	21500	16730	12660	9240	6380					
		Pe				18.16	16.80	15.34	13.82	12.25	10.65	9.05	7.47	5.93					
	50	Qo							33950	27600	22050	17330	13270	9820	6920				
		Pe							18.50	16.67	14.80	12.91	11.03	9.17	7.37				
4VG-25.2	30	Qo	90700	83200	69700	57900	47750	38950	31350	24800	19210	14460	10460						
		Pe	16.14	16.07	15.72	15.14	14.36	13.41	12.32	11.11	9.81	8.46	7.08						
	40	Qo	77400	71000	60500	40400	40650	33000	26450	20800	15030	11800	8320						
		Pe	19.56	19.22	18.37	17.32	16.11	14.76	13.31	11.78	10.20	8.60	7.00						
	50	Qo	64500	59100	49500	41000	33600	27200	21600	16830	12740	9260	6340						
		Pe	22.78	22.18	20.84	19.33	17.71	15.98	14.18	12.34	10.49	8.65	6.86						
Suction gas temperature 20°C, without liquid subcooling. Additional cooling or limited suction gas temperature.																			
BFS151	30		69000	64500	54300	45200	37300	30500	25600	19600	15300	11700	8900						
	40		58700	54800	46200	38400	31700	25900	21800	16700	13000	9900	7500						

г.Москва, ул.Малышева д.11 корп.3
Тел.: (495)785-95-95, www.promholod.com

Model	Condensing Temperature °C	Refrigerating Capacity Qo(W)									Power Consumption Pe(kW)								
		Evaporating Temperature(°C)																	
		↓	7.5	5	0	-5	-10	-15	-20	-25	-30	-35	-40	-45	-50	-55	-60	-65	-70
4VD-20.2	30	Qo				67100	55500	45400	36750	29350	23000	17600	13060	9260					
		Pe				18.22	17.12	15.89	14.55	13.12	11.62	10.08	8.53	6.97					
	40	Qo				57200	47300	38700	31200	24800	19250	14540	10540	7160					
		Pe				20.94	19.36	17.68	15.93	14.13	12.30	10.47	8.65	6.89					
	50	Qo							38750	31650	25450	20100	15480	11510	8120				
		Pe							21.25	19.15	17.02	14.87	12.73	10.63	8.60				
4VG-30.2	30	Qo	103800	95300	79900	66500	54900	44900	36250	28800	22450	17040	12480						
		Pe	19.21	19.07	18.57	17.81	16.84	15.70	14.41	13.02	11.57	10.09	8.61						
	40	Qo	89100	81800	68600	57000	47000	38250	30700	24200	18610	13860	9850						
		Pe	23.37	22.88	21.73	20.38	18.88	17.26	15.56	13.81	12.06	10.33	8.68						
	50	Qo	74300	68200	57100	47400	38900	31500	25100	19580	14840	10810	7410						
		Pe	27.01	26.20	24.46	22.58	20.60	18.56	16.50	14.45	12.45	10.54	8.76						
6WD-25.2	30	Qo				87900	72500	59300	47800	38000	29700	22650	16740	11850					
		Pe				23.50	22.15	20.58	18.83	16.94	14.95	12.89	10.81	8.75					
	40	Qo				74700	61600	50200	40400	31900	24700	18590	13440	9130					
		Pe				27.20	25.18	23.00	20.68	18.28	15.82	13.36	10.92	8.54					
	50	Qo							50500	41150	33000	25950	19920	14760	10390				
		Pe							27.78	25.02	22.18	19.31	16.43	13.59	10.93				
6WG-35.2	30	Qo	136000	124800	104500	86900	71600	58400	47000	37200	28800	21700	15720						
		Pe	25.11	24.84	24.07	23.04	21.77	20.29	18.64	16.83	14.91	12.89	10.81						
	40	Qo	116300	106600	89300	74100	60900	49450	39600	31100	23800	17670	12480						
		Pe	29.81	29.20	27.79	26.14	24.30	22.29	20.14	17.88	15.53	13.13	10.71						
	50	Qo	96600	88600	74100	61400	50400	40700	32400	25250	19160	14000	9670						
		Pe	34.17	33.23	31.19	28.96	26.56	24.04	21.41	18.71	15.96	13.20	10.45						
6WD-30.2	30	Qo				98300	81200	66400	53600	42700	33350	25400	18760	13210					
		Pe				26.77	2.507	23.21	21.20	19.08	16.84	14.54	12.17	9.76					
	40	Qo				84000	69300	56600	45550	36050	27900	21000	15130	10210					
		Pe				30.86	28.50	26.00	23.38	20.68	17.90	15.07	12.21	9.34					
	50	Qo							57600	46900	37600	29550	22600	16720	11710				
		Pe							31.43	28.35	25.18	21.94	18.67	15.37	12.06				
6WG-40.2	30	Qo	156100	143200	120000	99900	82500	67400	54300	43150	33600	25550	18730						
		Pe	30.46	29.91	28.66	27.20	25.57	23.77	21.82	19.75	17.56	15.28	12.93						
	40	Qo	133400	122400	102700	85400	70300	57300	46000	36300	28000	20900	14940						
		Pe	35.49	34.61	32.70	30.62	28.38	26.02	23.54	20.96	18.30	15.57	12.80						
	50	Qo	110800	101800	85400	70900	58300	47350	37800	29550	22500	16450	11330						
		Pe	40.19	38.97	36.42	33.73	30.91	27.99	24.99	21.92	18.79	15.63	12.46						
6WD-40.2	30	Qo				118800	98100	80100	64700	51400	40100	30500	22400	15600					
		Pe				31.46	29.74	27.69	25.37	22.84	20.14	17.34	14.49	11.63					
	40	Qo				100900	83100	67600	54300	42800	32950	24600	17570	11680					
		Pe				36.00	33.43	30.59	27.55	24.36	21.06	17.73	14.40	11.14					
	50	Qo							68300	55300	44050	34300	26050	18990	13060				
		Pe							36.68	33.08	29.33	25.49	21.62	17.76	13.98				
6WG-50.2	30	Qo	184400	169300	142200	118600	98100	80400	65200	52100	40900	31400	23450						
		Pe	36.24	35.76	34.49	32.87	30.95	28.79	26.43	23.94	21.38	18.79	16.23						
	40	Qo	157900	145000	121700	101300	83600	68300	55000	43600	33850	25600	18620						
		Pe	43.13	42.10	39.80	37.22	34.43	31.47	28.40	25.28	22.15	19.09	16.14						
	50	Qo	131000	120200	100800	83800	68900	56000	44800	35150	26950	19960	14090						
		Pe	49.80	48.21	44.85	41.30	37.60	33.83	30.02	26.24	22.53	18.97	15.59						
6WDS-20.2	30	Qo							31900	27450	23300	19440	15910	12760	10020	7690	5770	4230	
		Pe							16.43	15.02	13.64	12.30	11.00	9.76	8.57	7.44	6.40	5.40	
	40	Qo								30600	26350	22350	18610	15230	12240	9640	7420	5540	
		Pe								18.53	16.90	15.32	13.79	12.33	10.92	9.57	8.29	7.07	
	50	Qo								29350	25200	21350	17810	14630	11800	9280			
		Pe								20.63	18.79	17.01	15.30	13.65	12.07	10.55			
6WDS-25.2	30	Qo							36200	31300	26800	22250	18220	14620	11480	8830	6630	4870	
		Pe							18.84	17.27	15.71	14.16	12.65	11.19	9.80	8.49	7.29	6.20	
	40	Qo								34900	30100	25500	21300	17420	14000	11040	8500	6350	
		Pe								21.27	19.40	17.60	15.85	14.16	12.55	11.00	9.52	8.13	
	50	Qo								33450	28750	24350	20350	16720	13490	10620			
		Pe								23.71	21.58	19.35	17.56	15.67	13.85	12.10			
6WDS-30.2	30	Qo							43400	37400	31750	26500	21700	17420	13690	10540	7920	5800	
		Pe							22.53	20.65	18.78	16.94	15.15	13.42	11.77	10.20	8.74	7.40	
	40	Qo								41500	35700	30300	25300	20700	16680	13170	10150	7590	
		Pe								25.20	23.10	21.01	18.96	16.95	15.00	13.14	11.37	9.72	
	50	Qo								39500	34000	28850	24100	19870	16060	12650			
		Pe								28.07	25.69	23.33	21.01	18.75	16.57	14.49			

Suction gas temperature 20°C, 50Hz, without liquid subcooling.

Additional cooling or limited suction gas temperature.

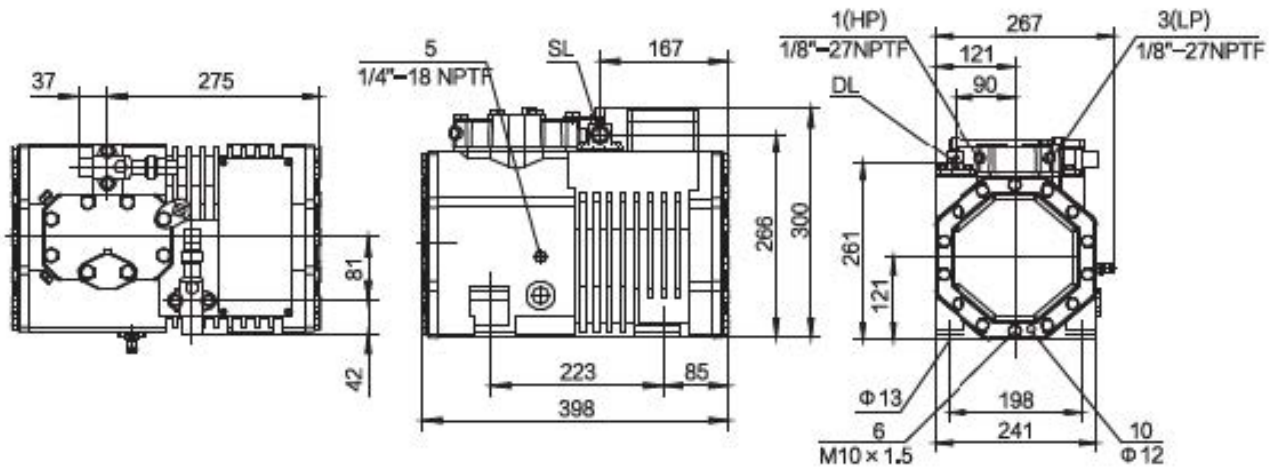
Additional cooling & liquid injection cooling system.

г.Москва, ул.Малышева д.11 корп.3
Тел.: (495)785-95-95, www.promholod.com

Габаритные чертежи

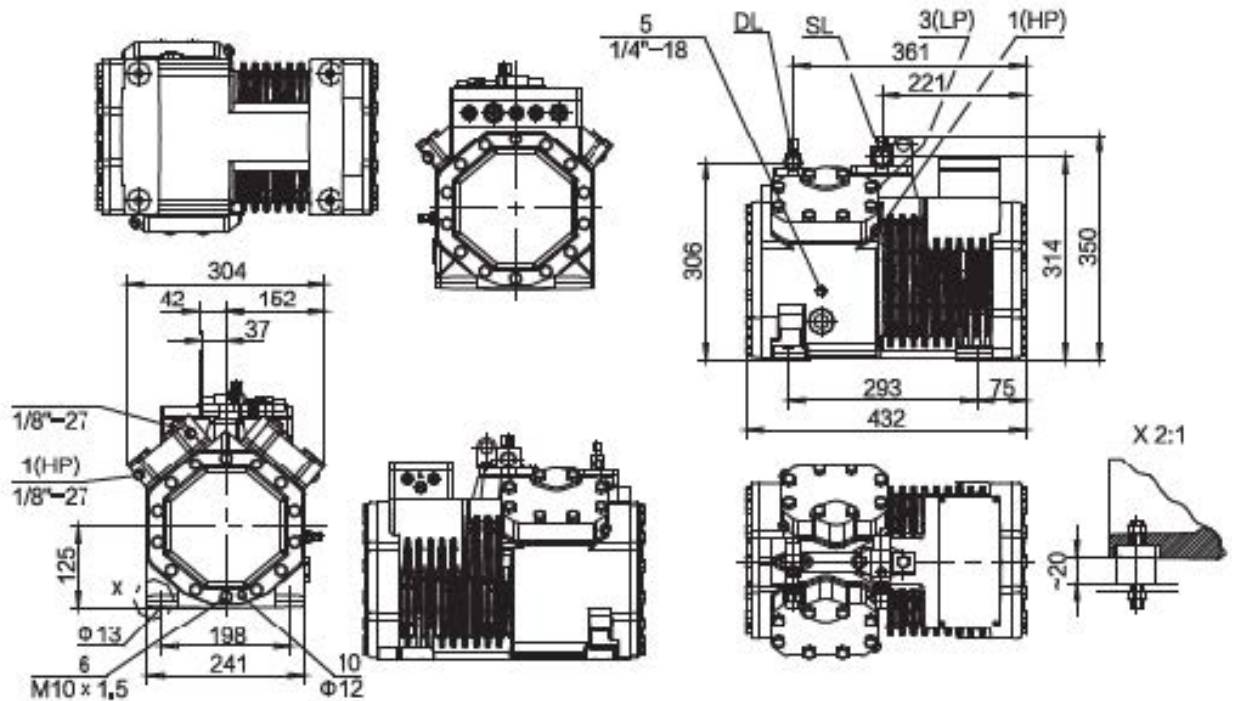
2YD-2.2—2YG-4.2

/Dimensional drawing of 2YD-2.2—2YG-4.2 compressor



4YD-3.2—4YG-9.2

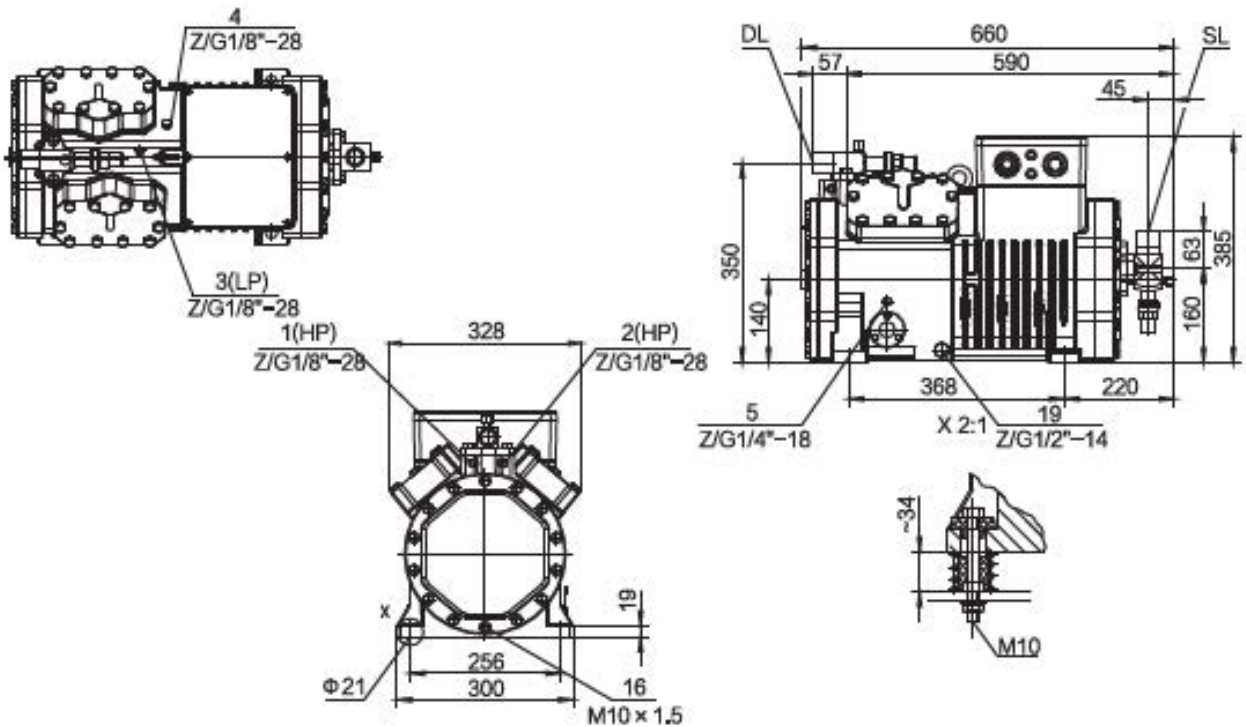
/Dimensional drawing of 4YD-3.2—4YG-9.2 compressor



г.Москва, ул.Малышева д.11 корп.3
Тел.: (495)785-95-95, www.promholod.com

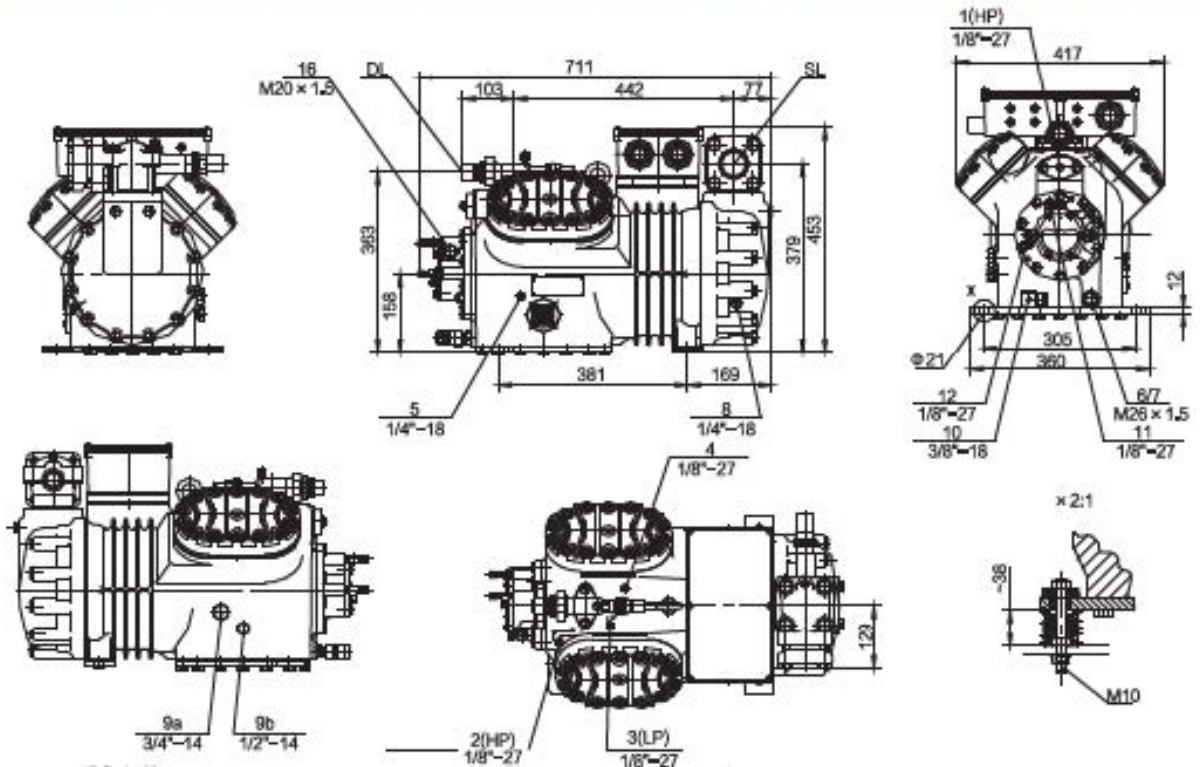
4YD-8.2—4YG-20.2

/Dimensional drawing of 4YD-8.2—4YG-20.2 compressor



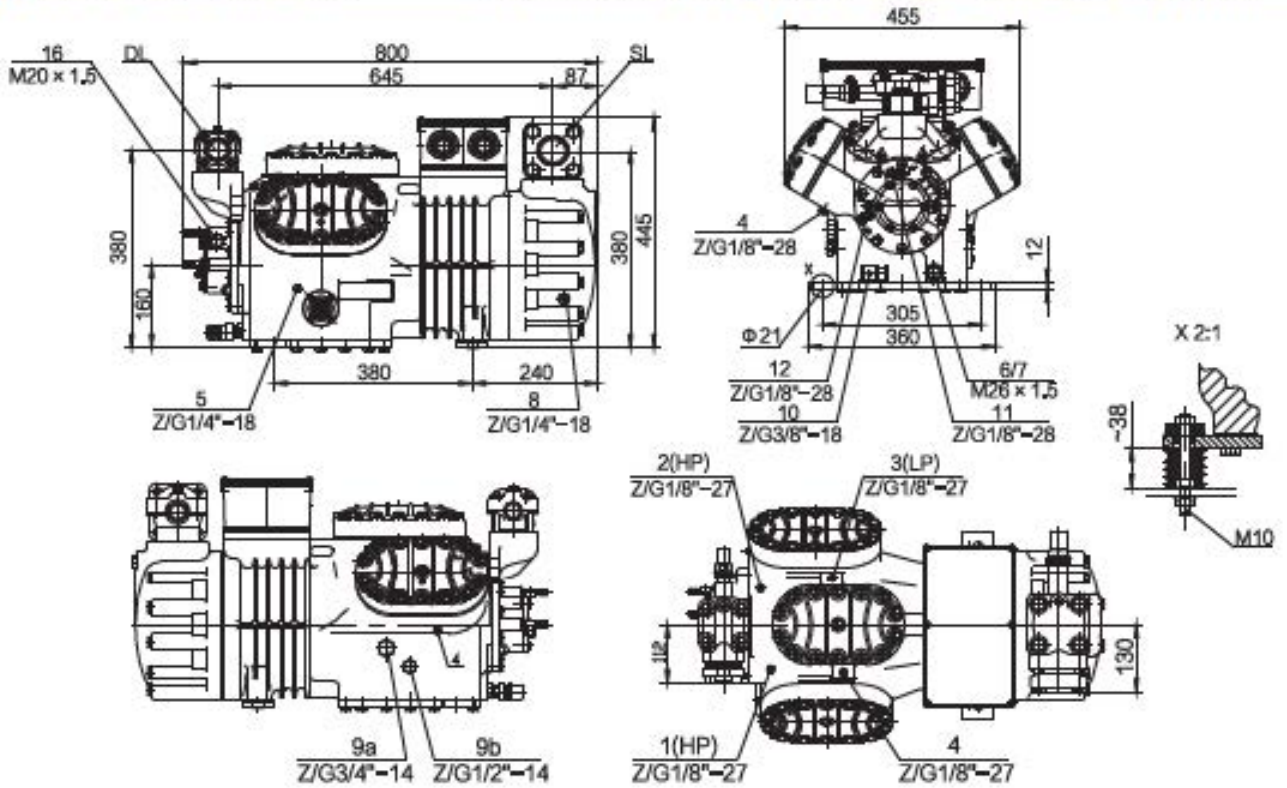
4VD-15.2—4VG-30.2

/Dimensional drawing of 4VD-15.2—4VG-30.2 compressor



г.Москва, ул.Мальшева д.11 корп.3
 Тел.: (495)785-95-95, www.promholod.com

6WD-25.2—6WG-50.2 /Dimensional drawing of 6WD-25.2—6WG-50.2 compressor



BFS 151 /Dimensional drawing of BFS 151 compressor

